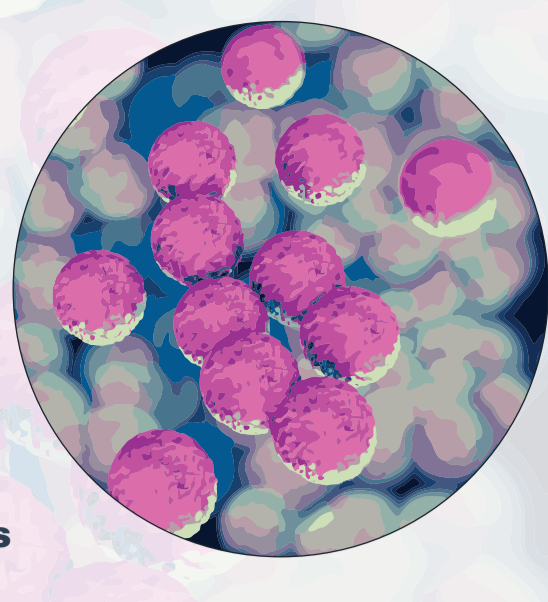


# MRSA MSSA

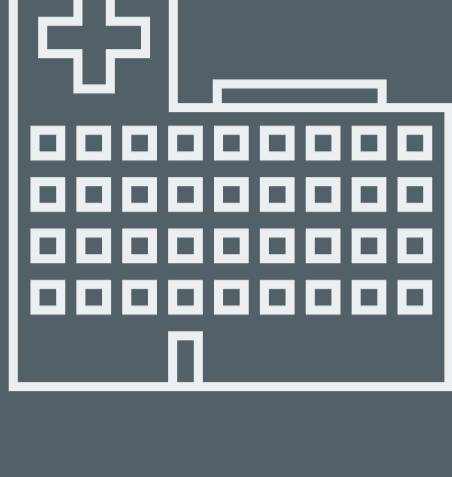
Methicillin-resistant *Staphylococcus aureus*  
Methicillin-susceptible *Staphylococcus aureus*



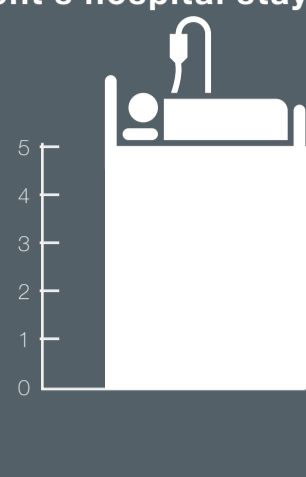
## HOSPITAL ECONOMIC IMPACTS

**SURGICAL SITE INFECTION  
CAUSED BY MRSA**

**5** ADDS DAYS<sup>1</sup>  
to patient's hospital stay



COSTS HOSPITAL  
AN ADDITIONAL  
**\$39,572**<sup>1</sup>



**WEIGH  
COST vs. RISK**  
of testing HAI spread



**CREATING  
ADDITIONAL  
COSTS**

**MRSA SCREENING  
NOT A REIMBURSED TEST**

**POSITIVE PATIENTS  
ARE ISOLATED, UNDERGO  
DECOLONIZATION AND  
CONTACT PRECAUTIONS**

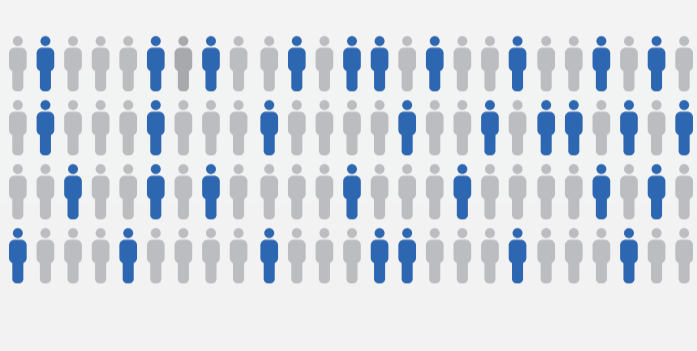
## DISEASE ASPECTS

**2**<sup>nd</sup> MOST COMMONLY  
REPORTED HAI<sup>2</sup>

**10.7%**

RESPONSIBLE FOR **11,000+** DEATHS

EVERY YEAR<sup>3</sup>



**33%** U.S. POPULATION

HAVE STAPH AUREUS COLONIES  
IN NOSE AND/OR SKIN<sup>4</sup>

## ACTIVE INFECTION



Usually happens in open  
wounds, post-surgery



**Staph. aureus** most common cause of  
PNEUMONIA & SURGICAL SITE INFECTIONS<sup>5</sup>

Treatment for active infections is  
IV vancomycin antibiotic therapy



## LABORATORY TESTING



**STAPH AUREUS PRE SCREEN**  
Many hospitals pre-screen for SA carriers  
and decolonize positive patients pre-surgery



**PCR vs. CULTURE**

< 5 HR. TAT vs. 24 HR. TAT

PCR is more sensitive and  
has faster turn-around time

HOWEVER

**50%** of institutions still  
choose culture  
BASED ON PERCEIVED COST SAVINGS



## Why cobas® MRSA/SA?

**Medical Value:** Good Sensitivity + Specificity<sup>6</sup> → Right Answer = **Appropriate Isolation**

**Workflow Efficiency:** Direct Sample Loading + Automation + 2-tests-in-1 = **MRSA + MSSA**

For more information, visit [mrsa.roche.com](http://mrsa.roche.com)

Sources:  
1. Engemann JJ, et al. Clin Infect Dis. 2003 Mar 1; 36(5):592-8.  
2. Magill SS et al. N Engl J Med 2014;370:1198-208  
3. Dantes, R. et al. JAMA Intern Med. 2013; 173(21):1970-8.  
4. [http://www.cdc.gov/mrsa/pdf/SHEA-mrsa\\_tagged.pdf](http://www.cdc.gov/mrsa/pdf/SHEA-mrsa_tagged.pdf) Accessed 12/8/2015  
5. Sievert, DM. et al. Infect Control Hosp Epidemiol. 2013 Jan;34(1):1-14.  
6. cobas® MRSA/SA Test [package insert]. Indianapolis, IN: Roche Diagnostics; 2015.